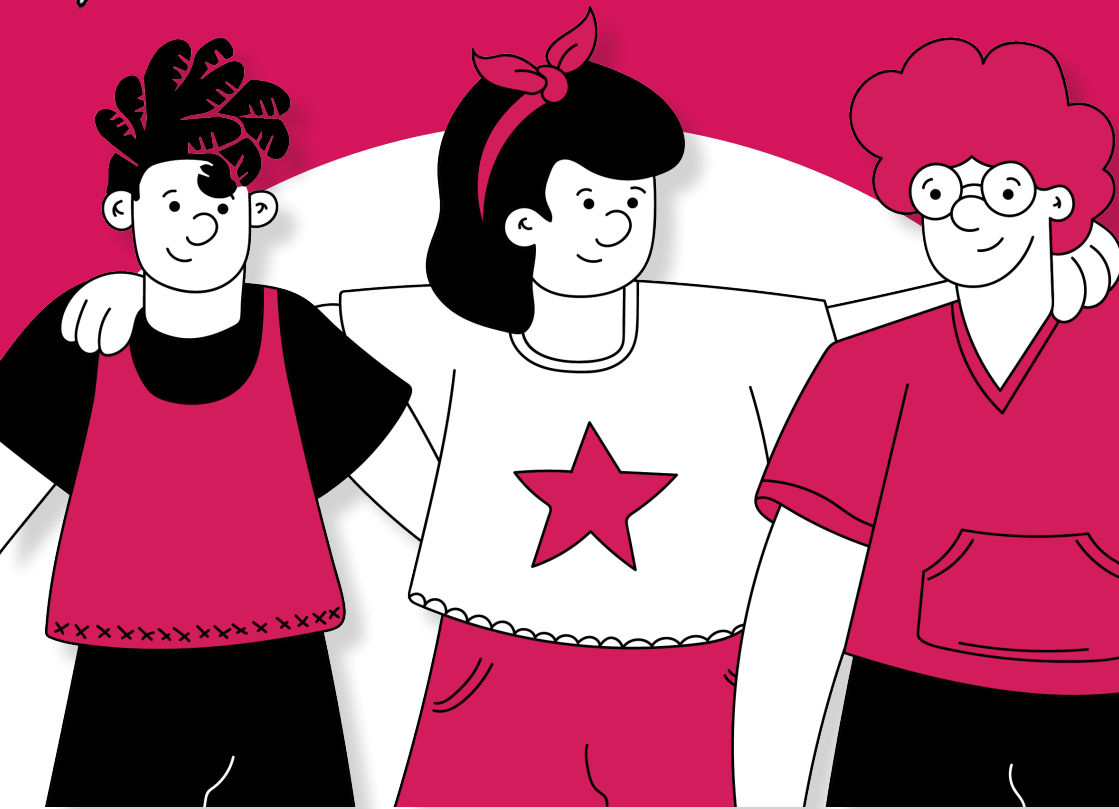


storyy<sup>®</sup>  
Education

# Empowering Young Minds with Alternative Provision

[www.storyy.group](http://www.storyy.group) | 01344 987877



# Reimagined AP

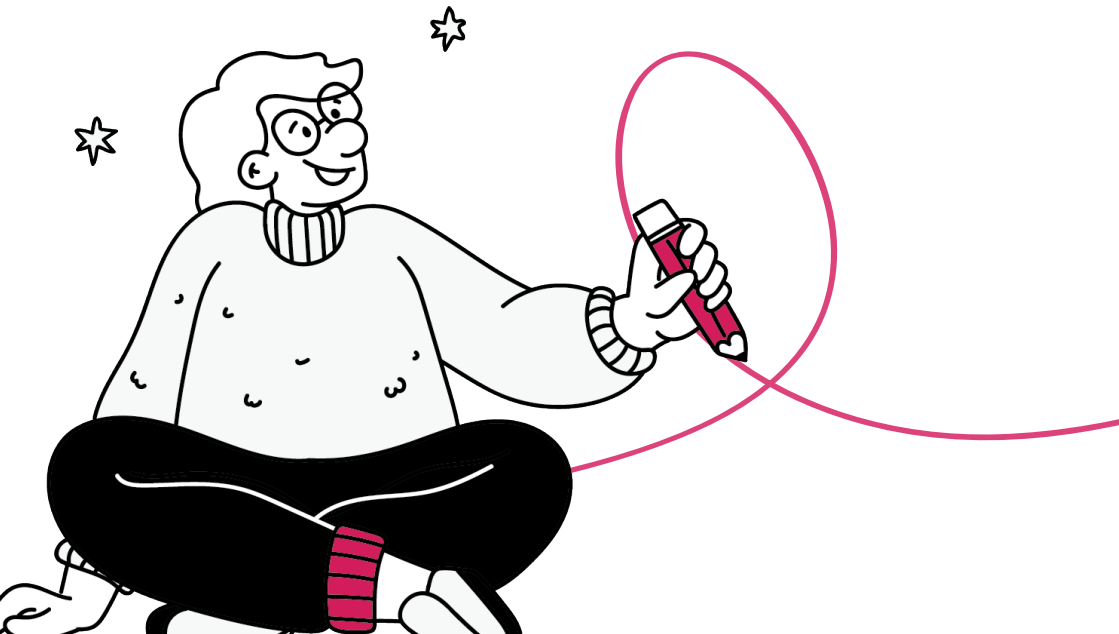
At Story Education, we believe that every young person deserves the chance to thrive, no matter their starting point.

Our specialist alternative provision (AP) services support learners with social, emotional and mental health needs (SEMH), helping them rebuild confidence, develop new skills and re-engage with education.

Whether we're supporting reintegration into mainstream school, preparing learners for further education or opening pathways to employment, we're here to help unlock every learner's potential.



*Take a look  
for yourself!*



# About Storyy Education



We were founded to create flexible, inclusive learning environments that meet the needs of learners who benefit from alternative education pathways.

**Our Vision:** Unlock potential through personalised learning and holistic support.

**Our Approach:** Combining academic tuition, vocational training and therapeutic interventions to create tailored pathways for every young person.

**Our Partnerships:** Working with schools, local authorities, families and professionals to ensure learners receive the right support, at the right time.

Together, we can turn barriers into bridges, equipping young people with the skills, confidence and direction to take their next step.

Our provision is responsive, evidence-led and rooted in care, so every learner feels seen and supported. The outcome we aim for is simple: sustained engagement, meaningful progress and positive destinations. This is our commitment, to meet each young person where they are and help them move forward with purpose.



# Who We Help

Story Education supports learners others can't reach. Young people whose education has been disrupted by SEMH needs, exclusions, illness or personal challenges are offered routes back to progress and confidence.

**Young People in Care:** Young people in care learn in safe, trusted environments with trauma-informed mentors who prioritise stability and calm.

**Students with SEMH Needs:** Tailored programmes focus on well-being, engagement and achievement, helping students rebuild confidence and routine.

**Learners Out of School:** Bespoke plans support those awaiting placements or unable to attend mainstream, keeping learning active and purposeful.

**Transitioning Learners:** Clear pathways guide young people into further education, apprenticeships or employment.

**Students at Risk of PEX:** Proactive, joined-up support with schools, families and local authorities reduces the risk of permanent exclusion and keeps learners connected to education.

Our approach is outcome-focused: the right support at the right time so learners build confidence and move toward their next step, be that reintegration, college, apprenticeship or work.

Trauma-informed mentoring, clear goals and regular reviews keep learning purposeful and strengthen well-being, engagement and progress.



# Our Approach



At Storyy Education, no two learners are the same, so neither are our programmes. We design personalised pathways that combine academic, vocational and therapeutic support to meet each learner's unique needs.

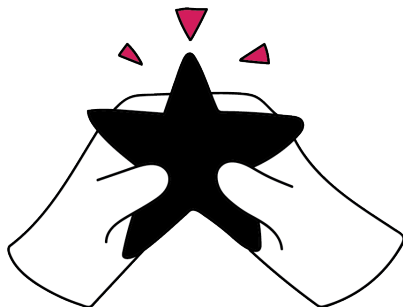
**Learner-Led Planning:** Tailored programmes based on strengths, challenges and aspirations.

**Holistic Development:** Balancing education, well-being and life skills to build resilience.

**Collaborative Working:** Partnering with schools, local authorities and families for joined-up support.

**Positive Progression:** Helping learners move forward confidently, whether reintegrating into school, continuing to further study or stepping into employment.

The outcome is a clear, consistent plan that feels right for each young person and delivers steady, measurable progress. With regular reviews and calm, trauma-informed practice, young people build confidence and momentum, so the next step, whether school, further study or work, feels achievable and supported.



# Storyybrook

Storyybrook is our purpose-built alternative provision for primary-aged learners (ages 4–11) with SEMH and SEN needs. Nestled across over three acres of green space, Storyybrook offers a calming, creative and nurturing learning environment designed to help children rebuild confidence, re-engage with learning and thrive.

## **At Storyybrook, learners benefit from:**



- Qualified Behaviour Mentors delivering focused, topic-based sessions in designated “topic rooms,” covering themes like life skills, festivals, and goal-setting.
- IXL online learning to support Maths and English, ensuring tailored academic skill development.
- Therapeutic support, including PAWS therapy, ELSA sessions and calming time in a cosy sensory room to help with emotional regulation and self-awareness.
- Outdoor learning opportunities, including allotments, cooking facilities, gardening and pet care that are designed to nourish physical wellbeing, creativity and connection to nature.
- Bespoke timetables, tailored to each child using a behaviour support model that blends one-to-one and small-Education support for consistency and personal growth.
- Creative, soft-start routines, such as “Newsround” and Story Time, designed to ease children gently into the day through shared reading and storytelling with mentors.





## Why Storyybrook Stands Out

It's not just about academics, it's a holistic provision that blends emotional support, resilience-building and practical learning. Here, learners rediscover joy in education and are supported on paths to reintegration and newfound confidence, all through environments designed for growth.



# Our Secondary Sites



## **Birch Hill (Sports, Music & Community Focus)**

Birch Hill offers a dynamic, supportive environment where learners build confidence and resilience through sport, creativity and community engagement. Our aim is to help students reconnect with education while developing practical skills and positive relationships.

- Basketball, football, boxing and cricket
- Music studio for songwriting, recording and production
- Cooking, gym sessions and strength conditioning
- PSHE curriculum and community projects
- SEMH and reintegration programmes to build resilience

## **Finchampstead (Creative Arts & Mindfulness Focus)**

At Finchampstead, we provide a calm and creative setting where learners explore self-expression while developing confidence and focus. By combining hands-on creative arts with structured mindfulness, we support both emotional and academic growth.

- Hair and beauty, textiles and fashion design
- Cooking, yoga, mindfulness and performing arts
- PSHE curriculum integration
- Working towards AQAS certifications
- SEMH and reintegration programmes to improve confidence



↪ *Get to know  
our sites better*



## Trades (Vocational Focus)

Trades gives learners the opportunity to gain practical, hands-on experience while building skills for further study or employment. With a focus on technical training, our programmes develop both confidence and career-ready capabilities.

- Carpentry, roofing, plastering, mechanics, gardening and scaffolding
- Practical skill-building to prepare learners for further study or employment
- Working towards AQA certifications

## Tutoring Hub

Our Tutoring Hub provides specialist support for secondary learners. Delivered at Birch Hill and Finchampstead, these sessions help close attainment gaps and build academic confidence.

- Targeted Maths and English tutoring
- Delivered at Birch Hill and Finchampstead provisions



# Our Services

Our services are built around personalisation and progress:

**SEMH Programmes:** Trauma-informed learning environments designed to rebuild engagement and confidence.

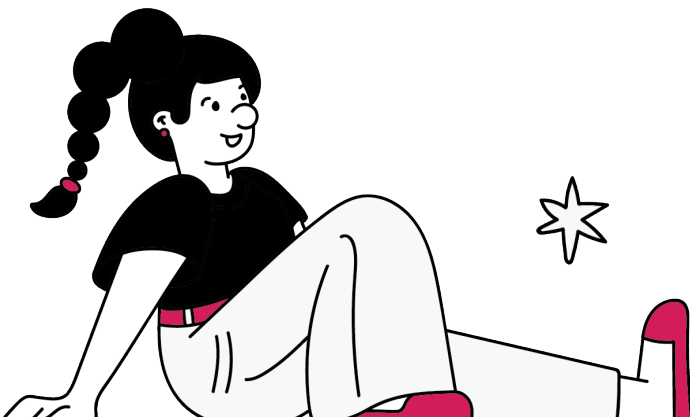
**Vocational Training:** Trades, sports, music and creative pathways that open future opportunities.

**Therapeutic Support:** Including PAWS therapy, ELSA sessions and mindfulness-based interventions.

**Tutoring:** 1:1 and small-Education sessions focused on Maths and English attainment.

**Accredited Learning:** We support learners to work towards recognised qualifications where available, helping them build pathways into further education, apprenticeships or employment.

Together these strands create a personalised route that rebuilds engagement, strengthens well-being and lifts attainment. Regular check-ins and clear goals keep momentum, while recognised awards and practical skills open doors to the next step and the confidence to sustain it.



# Real Stories.

## Real Change.

*"I just wanted to say, thank you so much for all you do for our young people. Storyy Education are excellent at supporting our young people and building their confidence and self-esteem. The skills they have learnt are invaluable inside and outside of school. Storyy Education go above and beyond and are adaptive to every young person's needs."*

**Rachel Fox**  
Inclusion Manager, Garth Hill College

*"From the moment we reached out to Storyy we have been fully supported and guided in choosing the right setting and completing the referral. Within a matter of a few weeks the positive impact of the provision for the young child was being noticed by us and external professionals; their story was beginning to be re-written."*

**Deputy Head Teacher**  
Ascot Health Primary





# Make a Referral

At Storyy Education, referrals are quick, and support can begin within 48 hours for a simple process that's built around the individual learner:

- 1. Quick Enquiry:** Contact us by phone, email or online form. Assessment & Matching: We review learner needs and develop a tailored plan.
- 2. Transparent Proposal:** Clear programme details and costs upfront.
- 3. Onboarding & Scheduling:** We manage logistics, safeguarding and timetables.
- 4. Provision Begins:** Learning starts promptly to minimise disruption.
- 5. Ongoing Reporting:** Regular updates on progress, attendance and engagement.

The aim is a swift, low-friction start that limits disruption and puts a stable routine in place from day one. With clear points of contact and regular reporting, schools and families stay aligned, and plans can be adjusted quickly as needs change, keeping support purposeful, accountable and effective.



*Make a direct referral*

# Contact Us

Let's write their next chapter together!

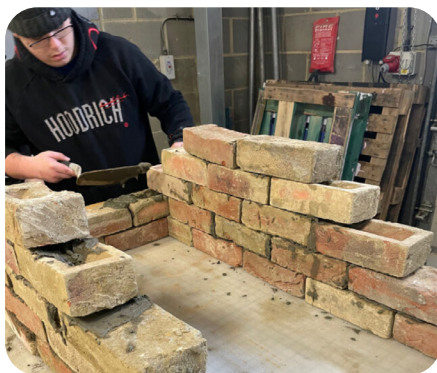
Whether you're making a referral, exploring tailored solutions or learning more about our provisions, our team is here to help.

**Call:** +44 (0) 1344 987 877

**Email:** [hello@storyy.group](mailto:hello@storyy.group)

**Visit:** [www.storyy.group](http://www.storyy.group)

We are creating a world where every young person has a brighter future.





01344 987877 | [hello@storyy.group](mailto:hello@storyy.group) | [www.storyy.group](http://www.storyy.group)

**storyy**<sup>®</sup>  
Education